

ZAH Student and Postdoc Representatives

At ZAH the largest group of scientific personnel comprises students and postdocs. Each group has its own specific needs which are manifold related to academic demands or the individual working environment. To improve the flow of information between these groups and the ZAH directorate we, the ZAH status group representatives, act as mediators. We are your trustable spokes and peer persons which you could approach in any cases regarding your working environment or specific demands which could only be solved on the ZAH executive level. Your issues will be handled confidentially, and/or (if you so wish) will be raised with the appropriate board/authority of the ZAH. As representatives, we participate in meetings of the ZAH Internal Scientific Council. For each status group and each of the three ZAH institutes one of us acts as peer representative.

ARI Student and Postdoc Representative



Who I am
Michael Hanke

How to reach me

ARI library building
office B.1-03
phone: 54-1892
email: mhanke@
ari.uni-heidelberg.de

What I work on

Stellar spectroscopy
Chemical abundances
Globular clusters



Who I am
Dr. Martin Altmann

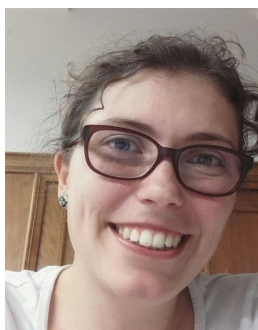
How to reach me

Aulerbau, ground floor
(A.E-01b),
phone: 54-1818
email: altmann@
ari.uni-heidelberg.de

What I work on

Gaia (GBOT, First Look),
BHB stars and the
structure of the Galaxy

ITA Student and Postdoc Representative



Who I am
Sara Konrad

How to reach me

Philosophenweg 12, 2nd
floor, room 205
phone: 54-4861
email: Sara.Kornad@
stud.uni-heidelberg.de

What I work on

I work on a kinetic field
theory, which gives an
analytical description of
non-linear cosmic
structure formation.



Who I am
Dr. Mattia Sormani

How to reach me

Albert-Ueberle-Str. 2,
ground floor, room 08
phone: 54-8973
email: mattia.sormani@
uni-heidelberg.de

What I work on

Dynamics of gas in
galaxies, blazars, SN
explosions, astrophy.
fluid dynamics

LSW Student and Postdoc Representative



Who I am
Steffi Xiang-Ting Yen

How to reach me

LSW main building office
#20
phone: 54-1703
email: syen@
lsw.uni-heidelberg.de

What I work on

Open star clusters using
Gaia data



Who I am
Dr. Chiara Battistini

How to reach me

LSW Nordinstitut
phone: 54-1793
email: cbattistini@
lsw.uni-heidelberg.de

What I work on

The galactic side of the
4MOST-project, metal
poor stars, assembly
history of the Milky Way